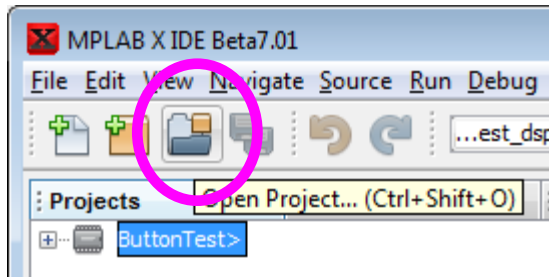


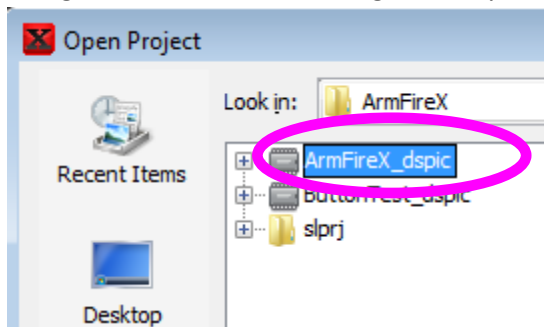
Using the Kerhuel Blockset Version 3.6a with MPLAB X
J Rogers 2011

Build the Simulink project and open MPLAB X.

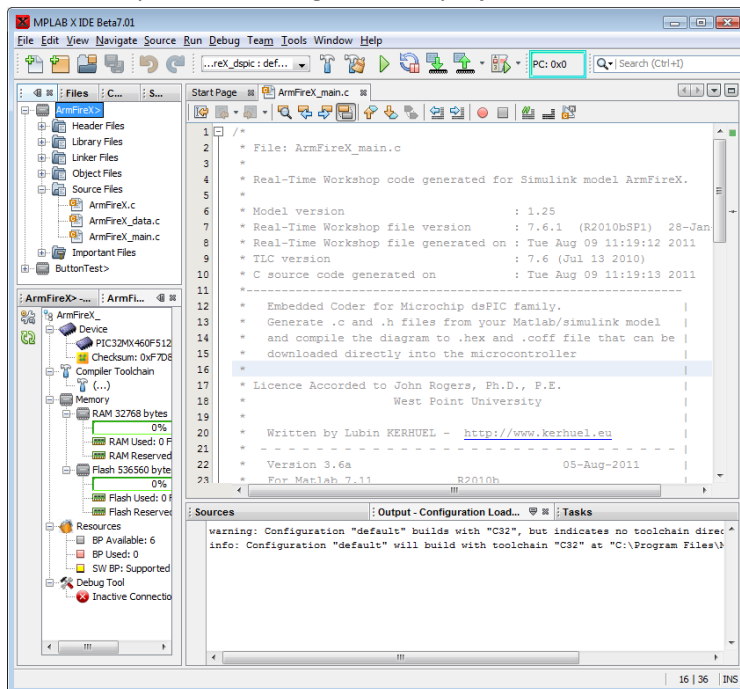
Click the Open Project icon (or File > Open Project... or Ctrl + Shift + O):



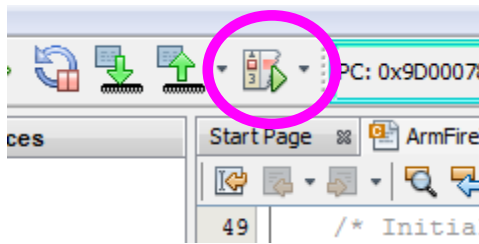
Navigate to the Matlab working directory and select the project folder: model_name_dspic:



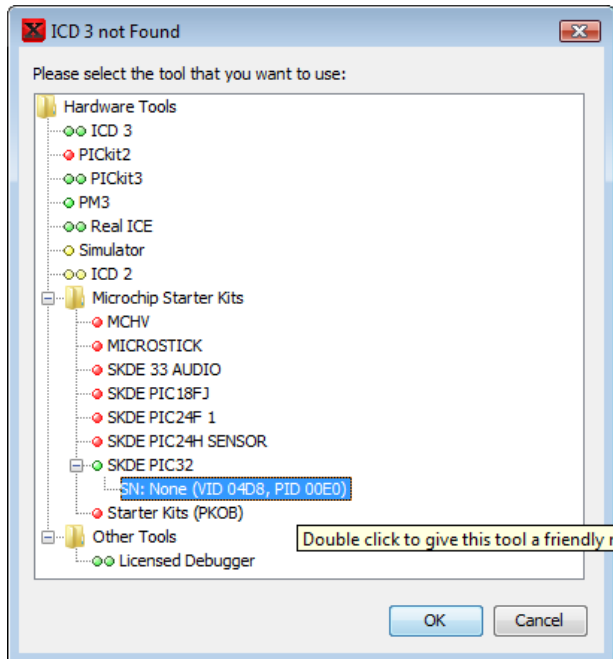
MPLAB X opens the auto-generated project. Source files are visible:



Click the Debug Project icon (or Debug Menu > Debug Project or Ctrl + F5).

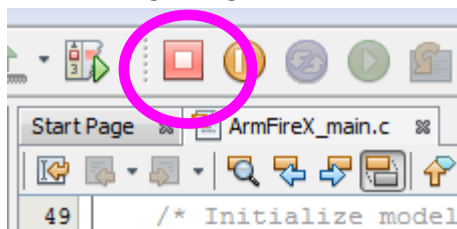


MPLAB X asks for the tool to use. Select your programming device. Mine is PIC32 starter kit:

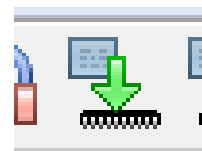


MPLAB X automatically builds, connects to hardware, programs, and runs the program.

After making changes to the Simulink model and rebuilding, click the “Finish Debugger Session” icon.



And then click the Debug Project icon again to reprogram.



Or to program without the debugger click the icon to “Make and Program Device”: